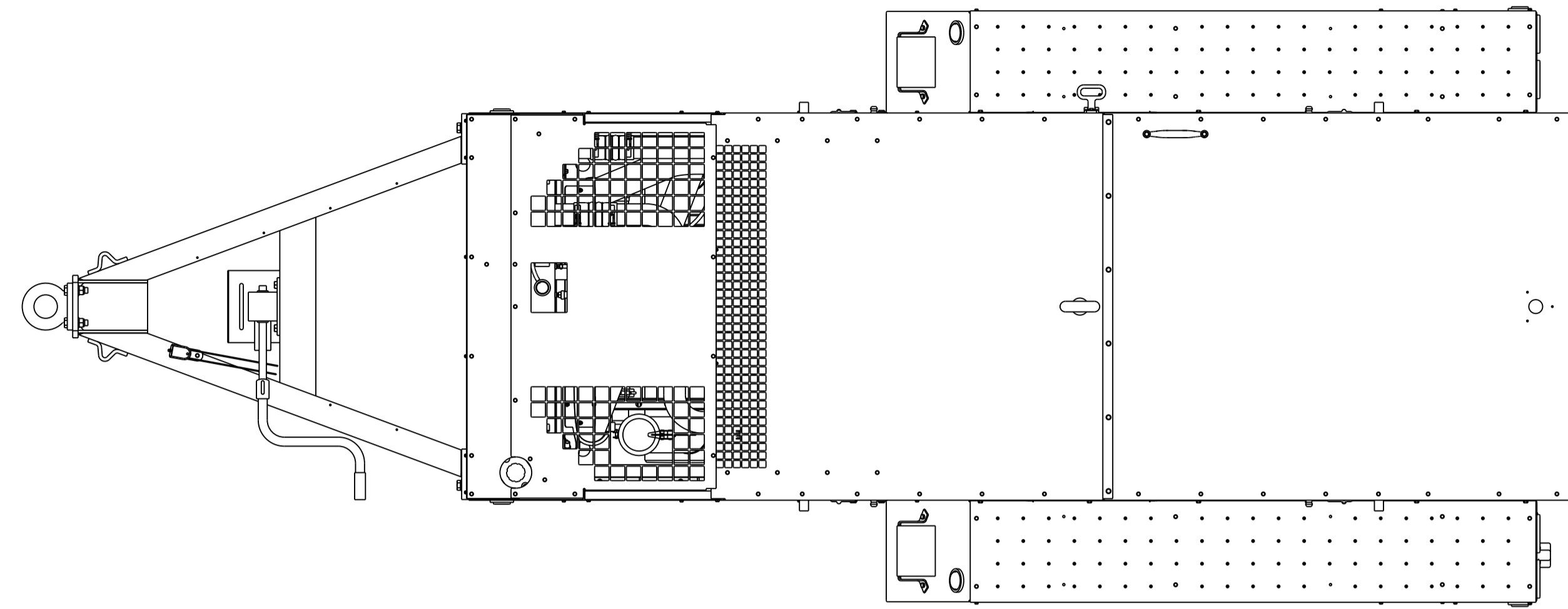


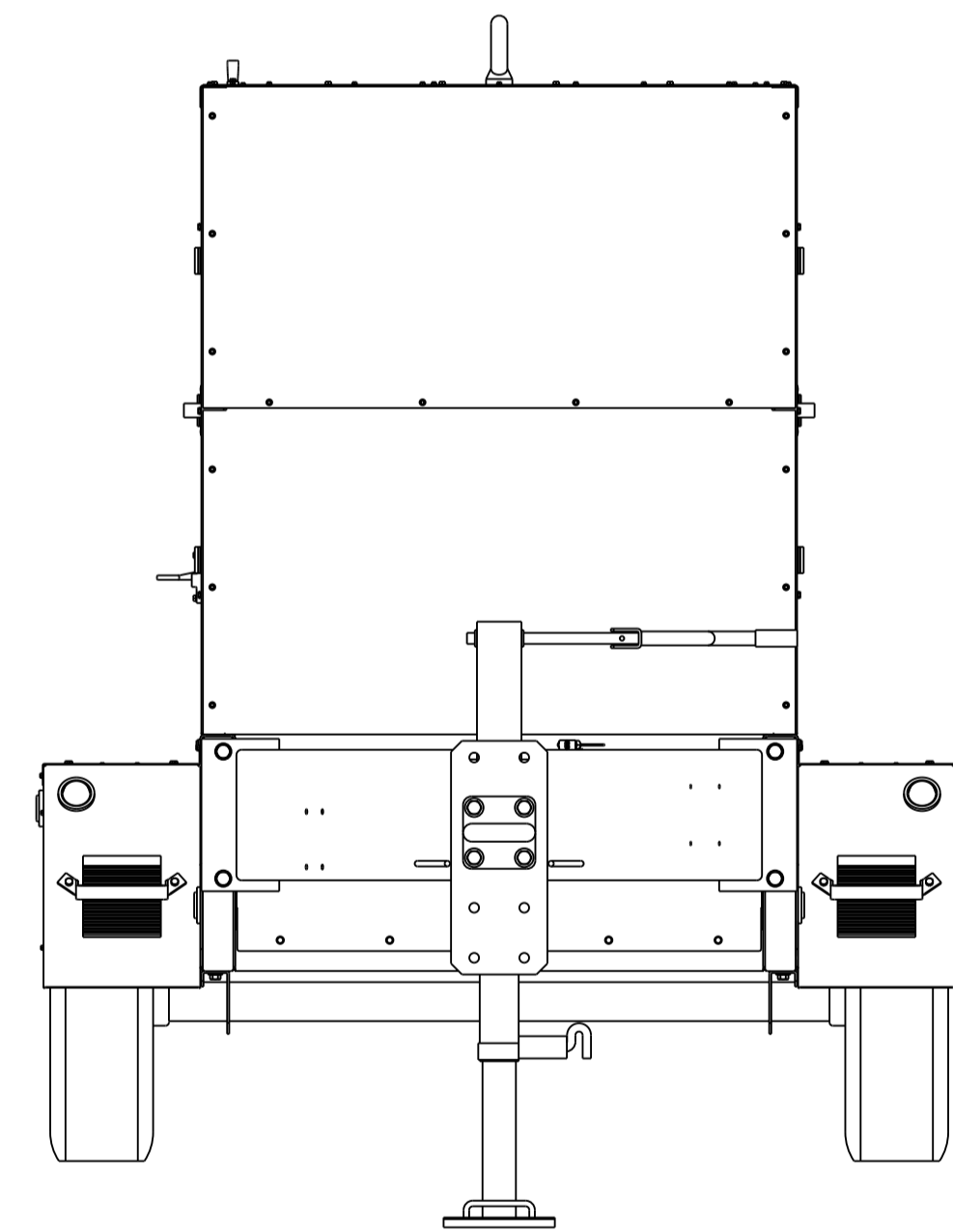
REVISIONS					
ZONE	REV	ECN	DESCRIPTION	DATE	APP'D
-	A	CN010901	ORIGINAL RELEASE	2011JUL19	SN RAW MSD

NOTES:

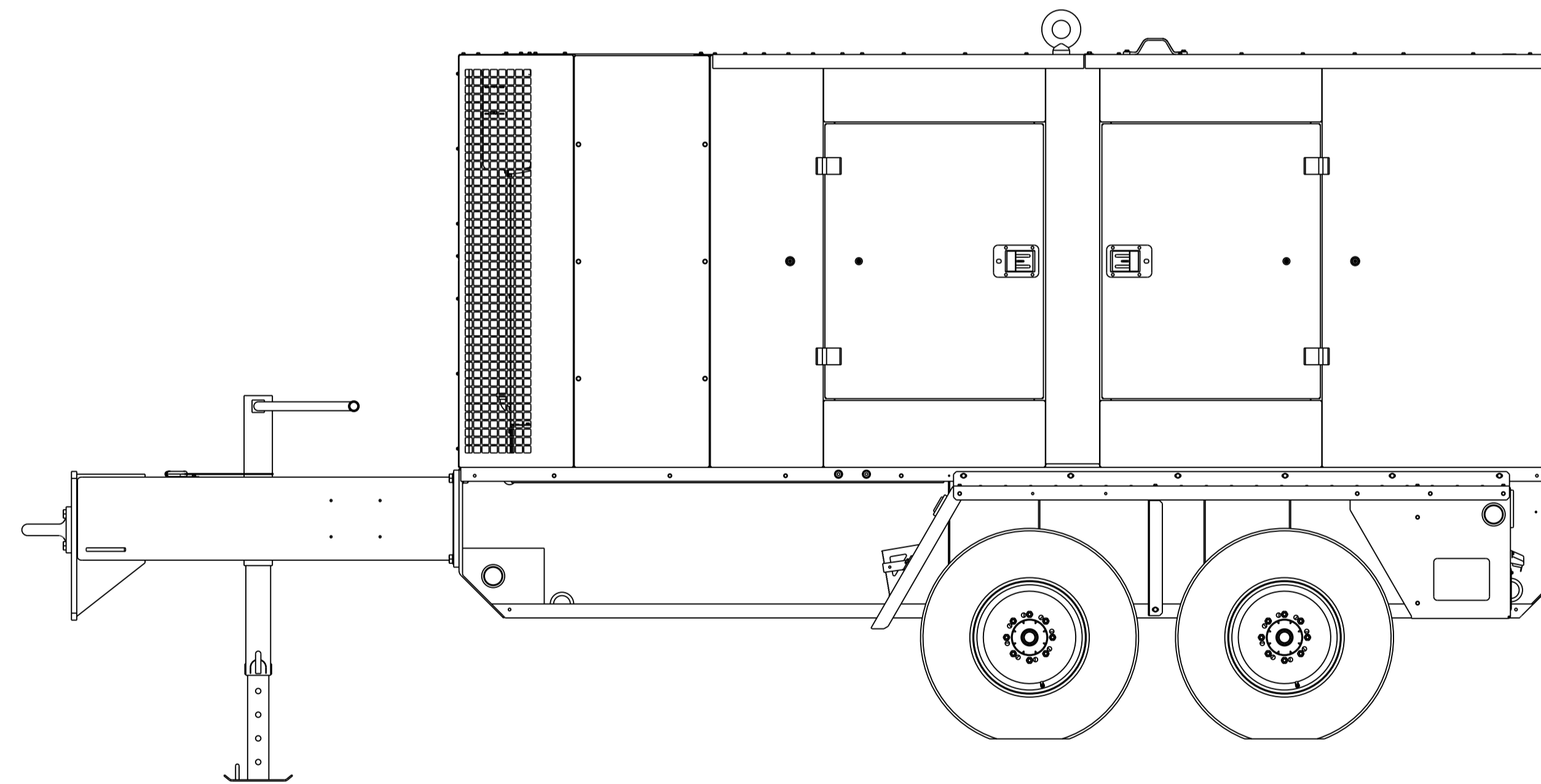
- MINIMUM CLEARANCE OF 36 INCHES FROM OPPOSING SURFACES IS TO BE MAINTAINED ON ALL SIDES AND OVERHEAD DURING OPERATION.
- INCH AND METRIC DIMENSIONING IN THE FIELD OF THE DRAWING ARE COMBINED BY PLACING THE METRIC DIMENSION BELOW THE INCH DIMENSION. E.G. INCH 10.5  
METRIC [267]



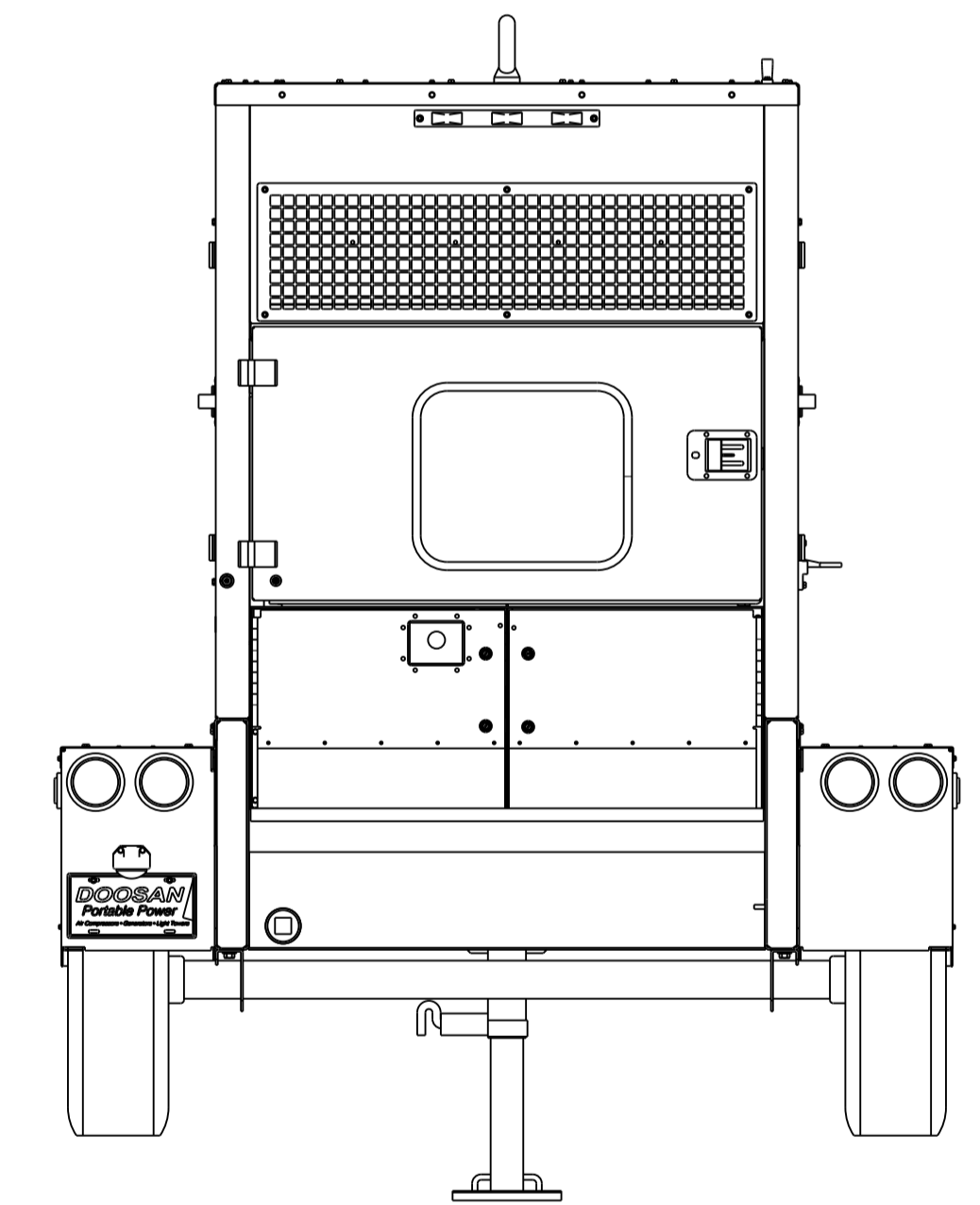
**TOP VIEW**  
SEE SHEET 3 FOR ENLARGED VIEW



**FRONT VIEW**  
SEE SHEET 4 FOR ENLARGED VIEW



**LEFT SIDE VIEW**  
SEE SHEET 2 FOR ENLARGED VIEW



**REAR VIEW**  
SEE SHEET 4 FOR ENLARGED VIEW

<b>TOLERANCES</b>  UNLESS OTHERWISE SPECIFIED, TOLERANCES ON DIMENSIONS ARE AS SPECIFIED ON DRAWING 36865731  UNLESS OTHERWISE SPECIFIED, ALL DIMENSIONS ARE IN MILLIMETERS.  <small>Doosan Infracore Portable Power</small>		<b>PROPRIETARY NOTICE</b>  THIS DRAWING CONTAINS CONFIDENTIAL AND TRADE SECRET INFORMATION, IS THE PROPERTY OF DOOSAN INFRACORE AND IS GIVEN TO THE RECEIVER IN CONFIDENCE. THE RECEIVER BY RECEPTION AND RETENTION OF THE DRAWING ACCEPTS THE DRAWING IN CONFIDENCE AND AGREES THAT, EXCEPT AS AUTHORIZED IN WRITING BY DOOSAN INFRACORE IT WILL (1) NOT USE THE DRAWING COPY THEREOF OR THE CONFIDENTIAL OR TRADE SECRET OR ANY INFORMATION THEREIN; (2) NOT COPY THE DRAWING; (3) NOT DISCLOSE TO OTHERS EITHER THE DRAWING OR THE CONFIDENTIAL OR TRADE SECRET INFORMATION THEREIN; AND (4) UPON COMPLETION OF THE NEED TO RETAIN THE DRAWING, OR UPON DEMAND, RETURN THE DRAWING, ALL COPIES THEREOF, AND ALL MATERIAL COPIED THEREFROM.		WARNING: THE EXPORT OR REEXPORT OF THIS DRAWING OR A PRODUCT PRODUCED BY THIS DRAWING IS SUBJECT TO U.S. EXPORT ADMINISTRATION REGULATIONS AND OTHER APPLICABLE GOVERNMENT RESTRICTIONS OR REGULATIONS.  COPYRIGHT © 2011 DOOSAN INFRACORE ALL RIGHTS RESERVED		 <b>DO NOT SCALE DRAWING</b>  DRAWING CONFORMS TO ASME Y14.5M - 1994  CAD GENERATED DRAWING, NO MANUAL REVISIONS ALLOWED  UNLESS OTHERWISE SPECIFIED: - REMOVE ALL BURRS AND SHARP CORNERS - WELD SYMBOLS TO BE IN ACCORDANCE WITH ANSI/AWS A2.4		 <b>Doosan Infracore</b> Portable Power  <b>GENERAL ARRANGEMENT</b>	
SIZE: <b>A1</b> SCALE: 0.06	ESTIMATED WEIGHT (KG UNLESS OTHERWISE SPECIFIED): -	DWG NO.: <b>46576439</b> UNIT: G190 / G240 T4i	REV: <b>A</b> SHEET 1 OF 6						

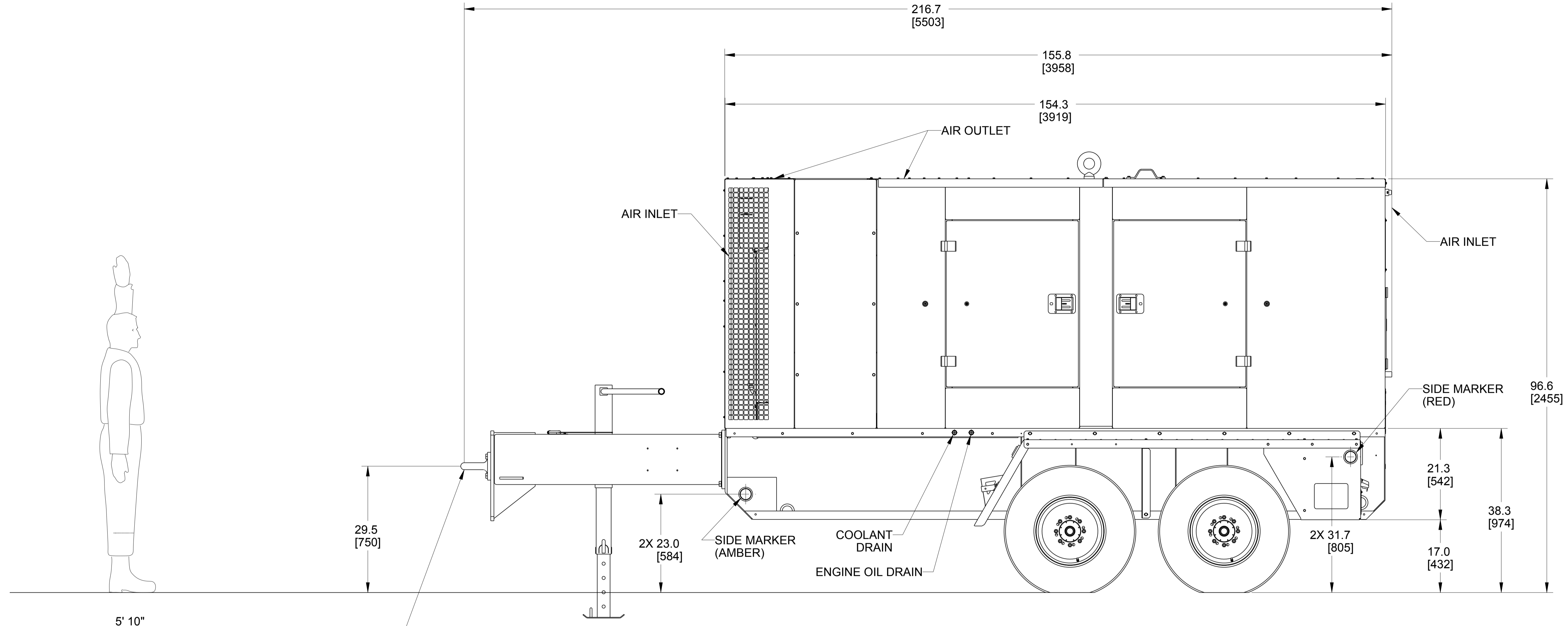
8 7 6 5 4 3 2 1

D

C

B

A



WEIGHT AT HITCH  
 G190 = 912 lbs. (NET WT.)  
 G240 = 940 lbs. (NET WT.)

**LEFT SIDE VIEW**

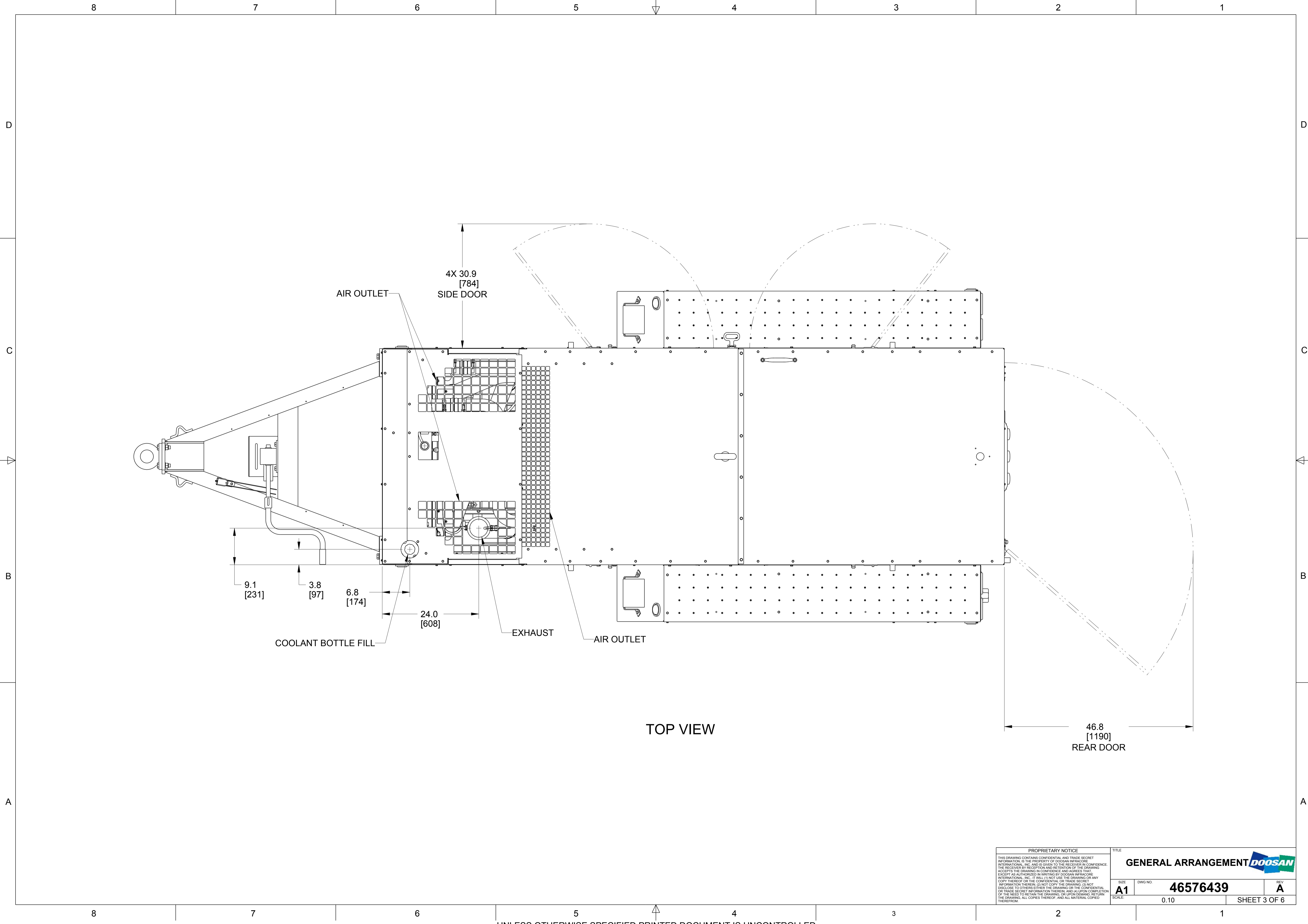
G240	10,803 lbs.	8,703 lbs.
G190	10,477 lbs.	8,377 lbs.
MODEL NO.	NET WEIGHT	SHIPPING WEIGHT

PROPRIETARY NOTICE  
THIS DRAWING CONTAINS CONFIDENTIAL AND TRADE SECRET INFORMATION IS THE PROPERTY OF DOOSAN INFRASTRUCTURE INTERNATIONAL, INC. AND IS GIVEN TO THE RECEIVER IN CONFIDENCE. THE RECEIVER BY RECEIPT AND RETENTION OF THE DRAWING ACCEPTS THE DRAWING IN CONFIDENCE AND AGREES THAT EXCEPT AS AUTHORIZED BY WRITING BY DOOSAN INFRASTRUCTURE INTERNATIONAL, INC. IT WILL (1) NOT USE THE DRAWING OR ANY COPY THEREOF OR THE CONFIDENTIAL TRADE SECRET INFORMATION THEREIN; (2) NOT COPY, REPRODUCE, OR DISCLOSE TO OTHERS EITHER THE DRAWING OR THE CONFIDENTIAL OR TRADE SECRET INFORMATION THEREIN; AND (3) UPON COMPLETION OF THE NEED TO RETAIN THE DRAWING, OR UPON DEMAND, RETURN THE DRAWING, ALL COPIES THEREOF, AND ALL MATERIAL COPIED THEREFROM.

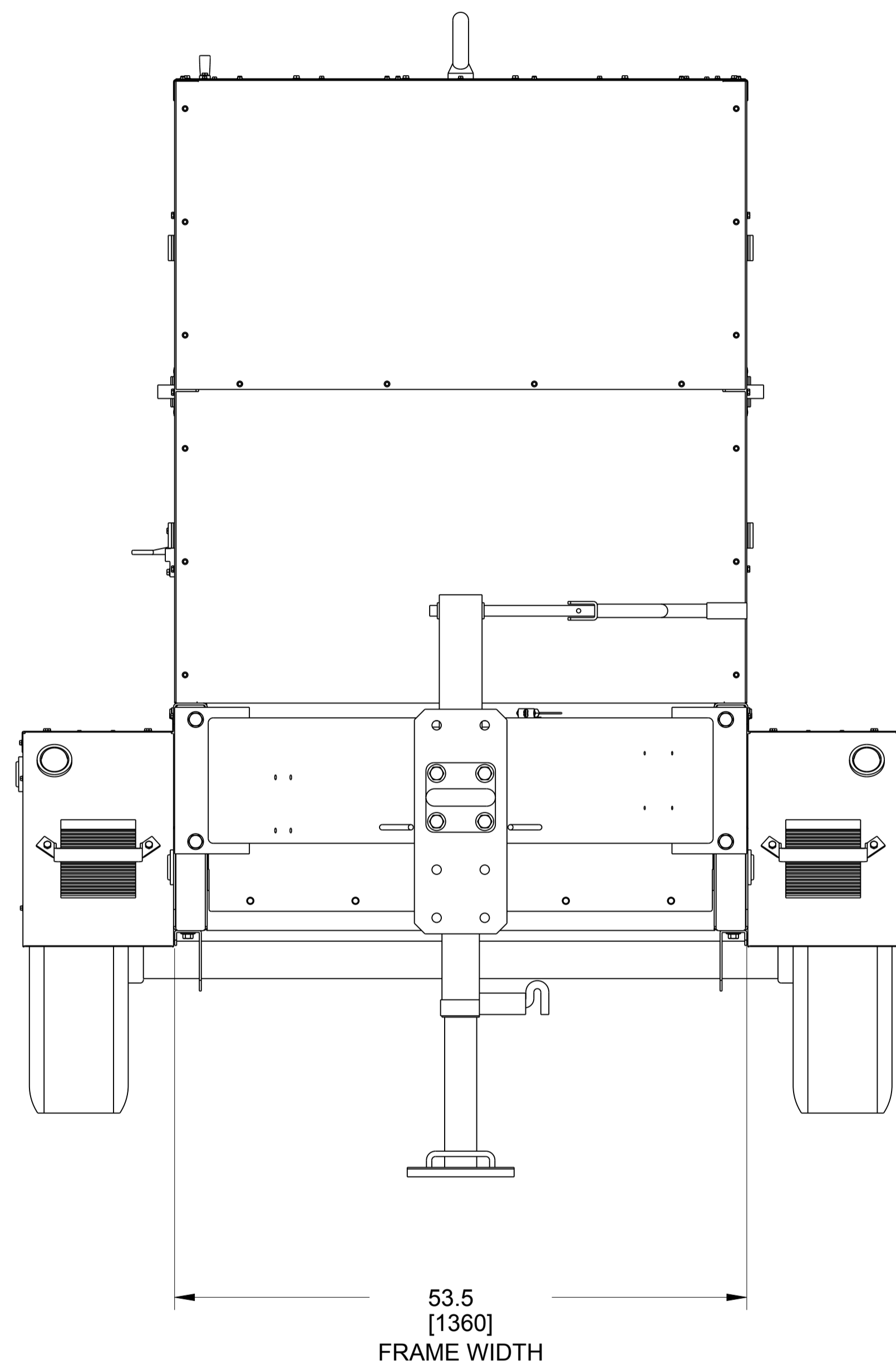
**GENERAL ARRANGEMENT**

SIZE: **A1** DWG NO: **46576439** REV: **A**  
 SCALE: 0.08 SHEET 2 OF 6

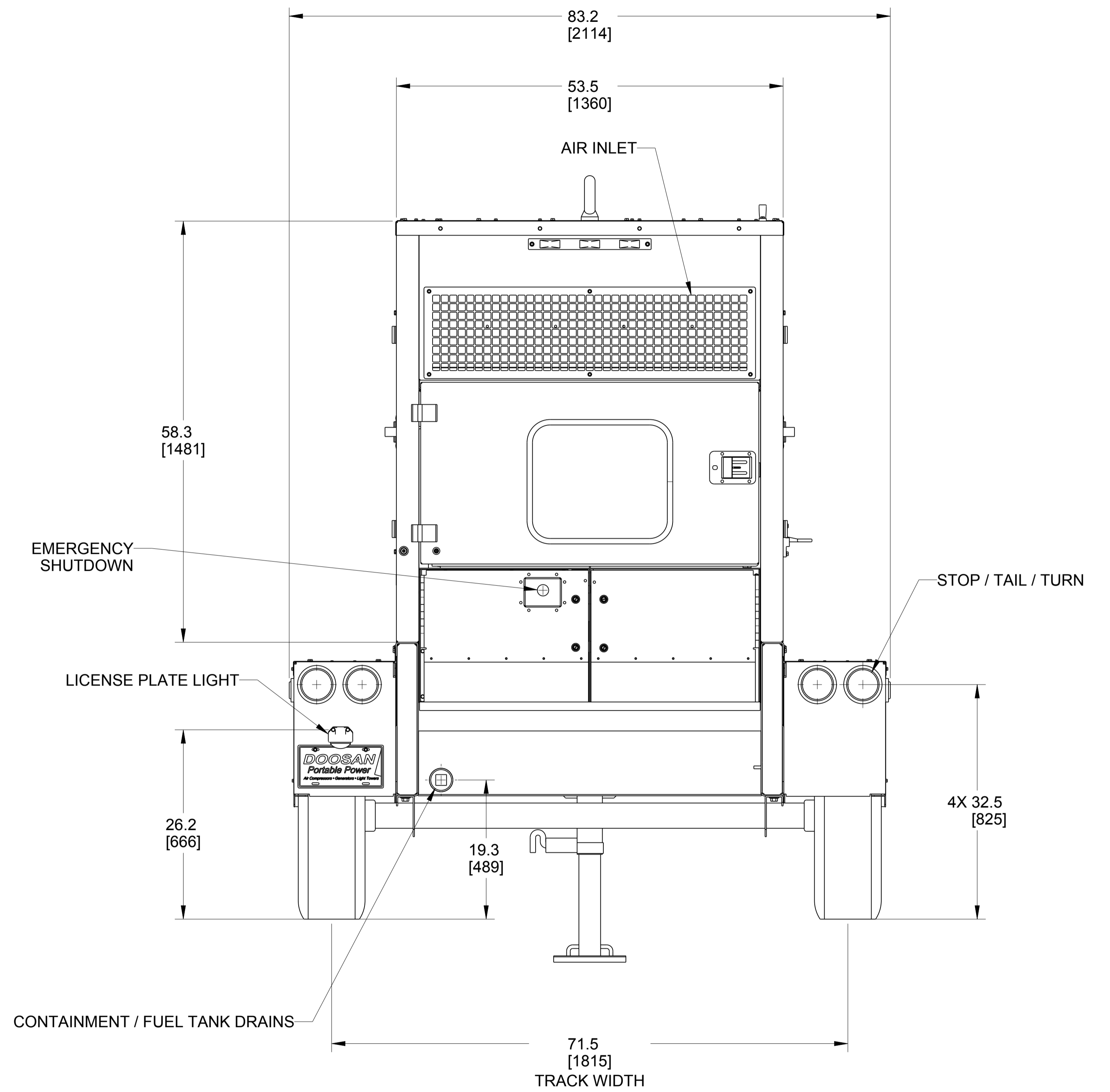
8 7 6 5 4 3 2 1




<small>PROPRIETARY NOTICE</small> <small>THIS DRAWING CONTAINS CONFIDENTIAL AND TRADE SECRET INFORMATION IS THE PROPERTY OF DOOSAN INFRA-CORE INTERNATIONAL, INC. AND IS GIVEN TO THE RECEIVER IN CONFIDENCE. THE RECEIVER BY ACCEPTANCE AND RETENTION OF THE DRAWING ACCEPTS THE DRAWING IN CONFIDENCE AND AGREES THAT EXCEPT AS AUTHORIZED BY WRITING BY DOOSAN INFRA-CORE INTERNATIONAL, INC. IT WILL (1) NOT USE THE DRAWING OR ANY COPY THEREOF OR THE CONFIDENTIAL OR TRADE SECRET INFORMATION THEREIN; (2) NOT COPY, REPRODUCE, DISCLOSE TO OTHERS EITHER THE DRAWING OR THE CONFIDENTIAL OR TRADE SECRET INFORMATION THEREIN; AND (3) UPON COMPLETION OF THE NEED TO RETAIN THE DRAWING, OR UPON DEMAND, RETURN THE DRAWING, ALL COPIES THEREOF, AND ALL MATERIAL COPIED THEREFROM.</small>		<small>TITLE</small> <b>GENERAL ARRANGEMENT</b>	
<small>SIZE</small> <b>A1</b>	<small>DWG NO.</small> <b>46576439</b>	<small>REV</small> <b>A</b>	<small>SCALE</small> <b>0.10</b>
			<small>SHEET 3 OF 6</small>

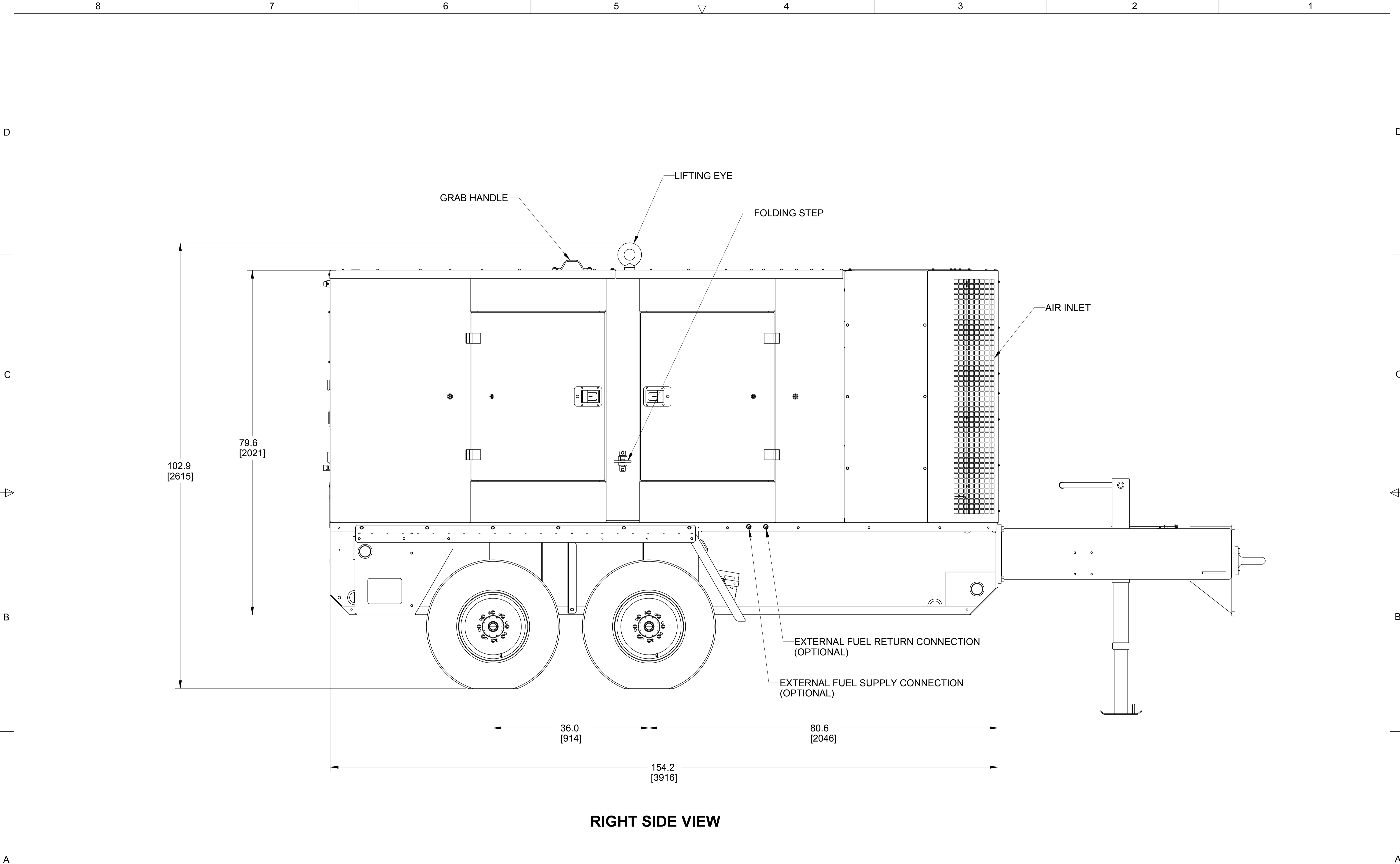


**FRONT VIEW**

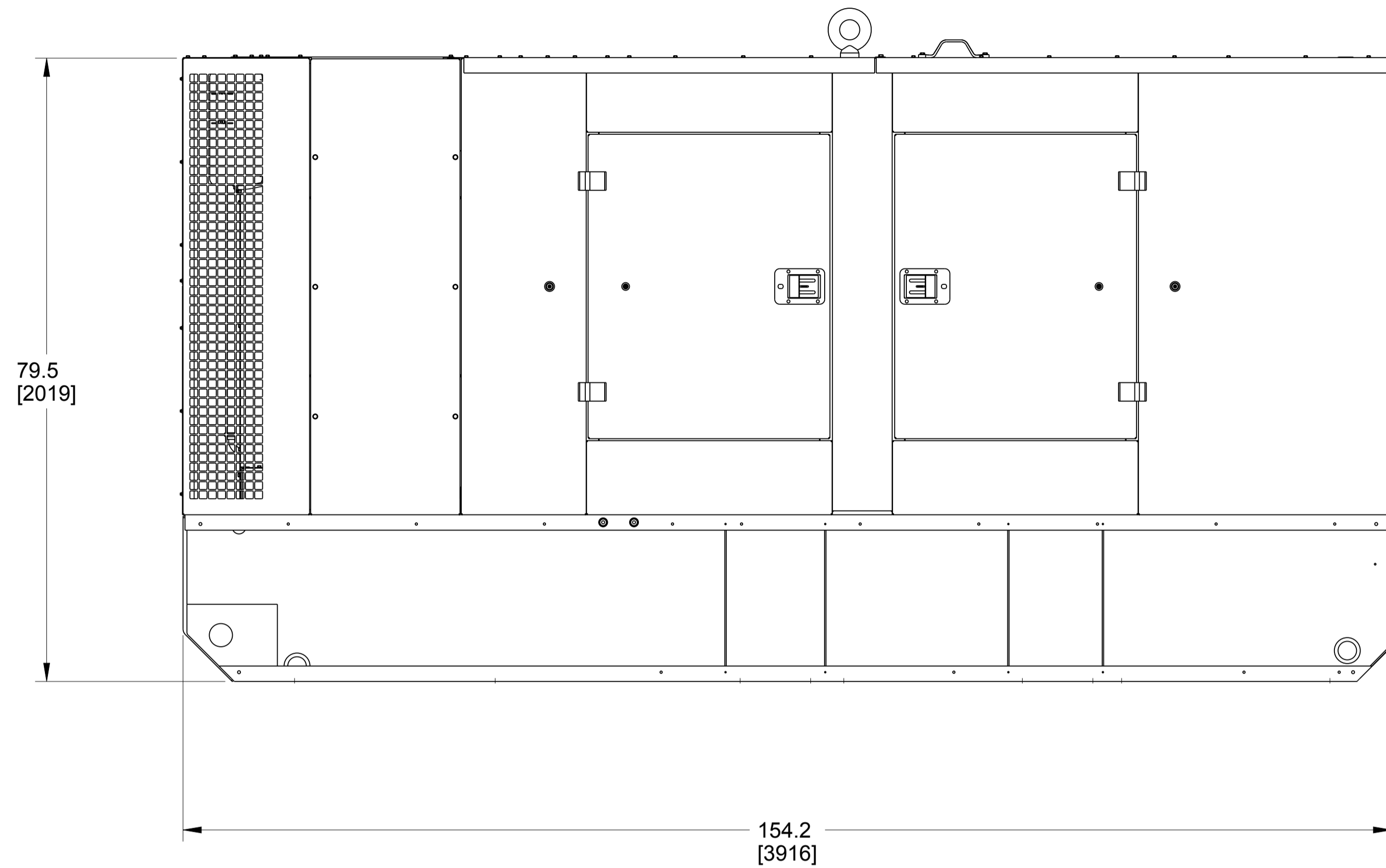


**REAR VIEW  
(CONTROLS VIEW)**

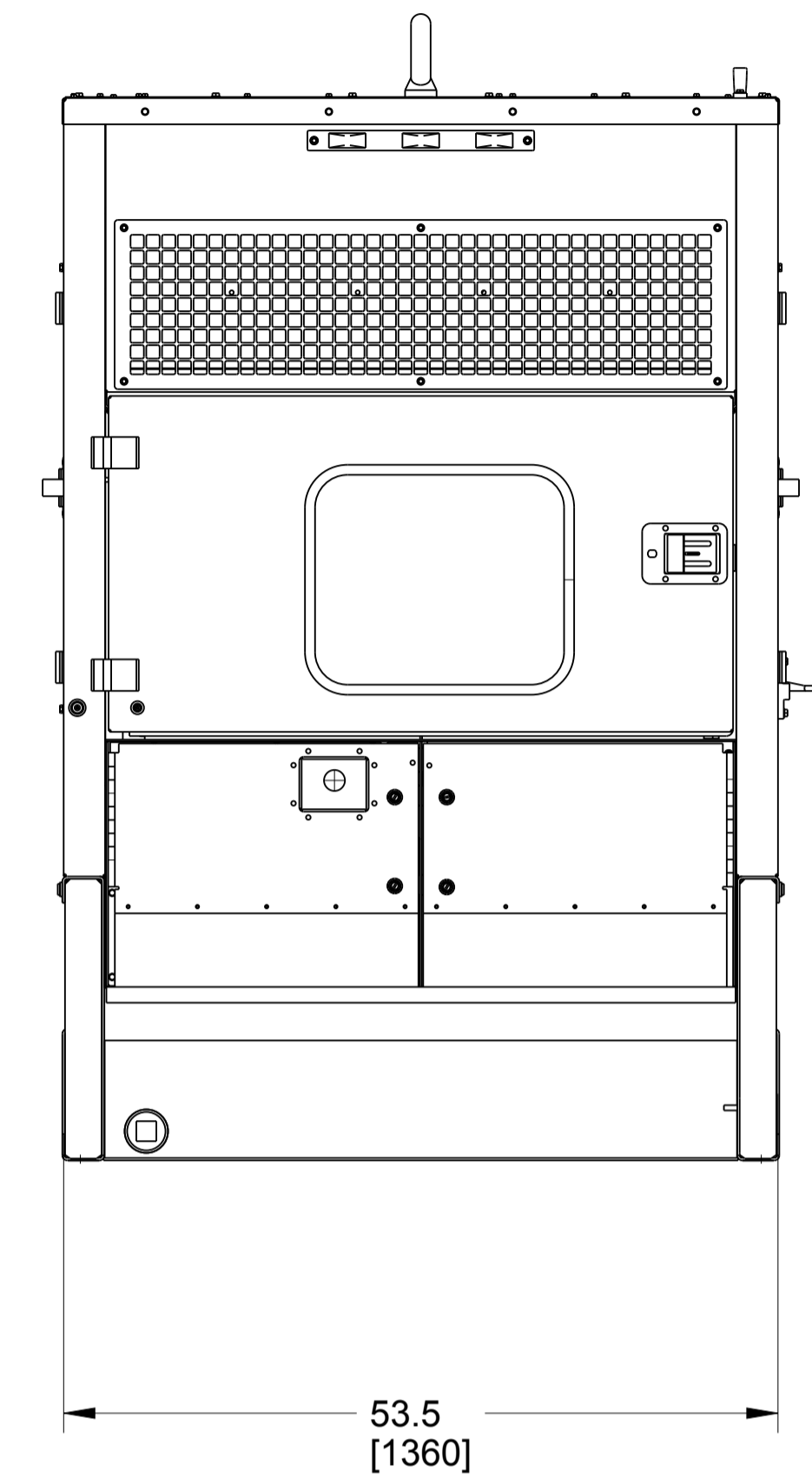
<small>PROPRIETARY NOTICE</small> THIS DRAWING CONTAINS CONFIDENTIAL AND TRADE SECRET INFORMATION IS THE PROPERTY OF DOOSAN INFRASTRUCTURE INTERNATIONAL, INC. AND IS GIVEN TO THE RECEIVER IN CONFIDENCE. THE RECEIVER BY RECEIPT AND RETENTION OF THE DRAWING ACCEPTS THE DRAWING IN CONFIDENCE AND AGREES THAT EXCEPT AS AUTHORIZED BY WRITING BY DOOSAN INFRASTRUCTURE INTERNATIONAL, INC. IT WILL (1) NOT USE THE DRAWING OR ANY COPY THEREOF OR THE CONFIDENTIAL OR TRADE SECRET INFORMATION THEREIN; (2) NOT COPY THE DRAWING; (3) NOT DISCLOSE TO OTHERS EITHER THE DRAWING OR THE CONFIDENTIAL OR TRADE SECRET INFORMATION THEREIN; AND (4) UPON COMPLETION OF THE NEED TO RETAIN THE DRAWING, OR UPON DEMAND, RETURN THE DRAWING, ALL COPIES THEREOF, AND ALL MATERIAL COPIED THEREFROM.		<b>GENERAL ARRANGEMENT</b> 	
SIZE <b>A1</b>	DWG NO. <b>46576439</b>	REV <b>A</b>	SHEET 4 OF 6
SCALE: 0.10			



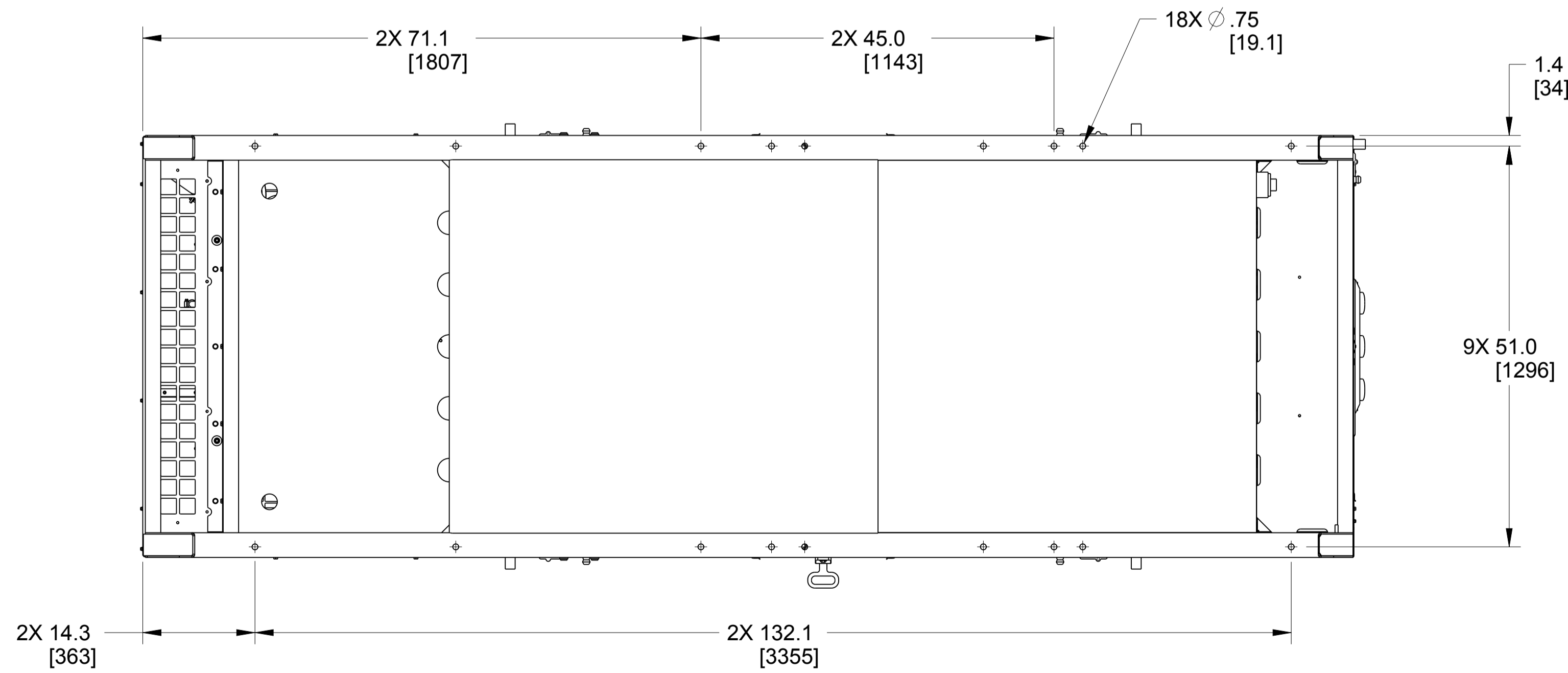
<small>PROPRIETARY NOTICE</small> <small>THIS DRAWING CONTAINS CONFIDENTIAL AND TRADE SECRET INFORMATION IS THE PROPERTY OF DOOSAN INFRACORE INTERNATIONAL, INC. AND IS GIVEN TO THE RECEIVER IN CONFIDENCE. THE RECEIVER BY RECEIPT AND RETENTION OF THE DRAWING ACCEPTS THE DRAWING IN CONFIDENCE AND AGREES THAT EXCEPT AS AUTHORIZED BY WRITING BY DOOSAN INFRACORE INTERNATIONAL, INC. IT WILL (1) NOT USE THE DRAWING OR ANY COPY THEREOF OR THE CONFIDENTIAL OR TRADE SECRET INFORMATION THEREIN; (2) NOT COPY THE DRAWING; (3) NOT DISCLOSE TO OTHERS EITHER THE DRAWING OR THE CONFIDENTIAL OR TRADE SECRET INFORMATION THEREIN; AND (4) UPON COMPLETION OF THE NEED TO RETAIN THE DRAWING, OR UPON DEMAND, RETURN THE DRAWING, ALL COPIES THEREOF, AND ALL MATERIAL COPIED THEREFROM.</small>		<small>TITLE</small> <b>GENERAL ARRANGEMENT</b>	
<small>SIZE</small> <b>A1</b>	<small>DWG NO.</small> <b>46576439</b>	<small>REV</small> <b>A</b>	<small>SCALE</small> 0.10
			<small>SHEET 5 OF 6</small>



**LESS RUNNING GEAR OPTION  
(LEFT SIDE VIEW)**



**LESS RUNNING GEAR OPTION  
(CONTROLS VIEW)**



**LESS RUNNING GEAR OPTION  
(BOTTOM VIEW)**

<small>PROPRIETARY NOTICE</small> <small>THIS DRAWING CONTAINS CONFIDENTIAL AND TRADE SECRET INFORMATION IS THE PROPERTY OF DOOSAN INFRASTRUCTURE INTERNATIONAL, INC. AND IS GIVEN TO THE RECEIVER IN CONFIDENCE. THE RECEIVER BY ACCEPTANCE AND RETENTION OF THE DRAWING ACCEPTS THE DRAWING IN CONFIDENCE AND AGREES THAT EXCEPT AS AUTHORIZED BY WRITING BY DOOSAN INFRASTRUCTURE INTERNATIONAL, INC. IT WILL (1) NOT USE THE DRAWING OR ANY COPY THEREOF OR THE CONFIDENTIAL OR TRADE SECRET INFORMATION THEREIN; (2) NOT COPY THE DRAWING OR ANY DISCLOSE TO OTHERS EITHER THE DRAWING OR THE CONFIDENTIAL OR TRADE SECRET INFORMATION THEREIN; AND (3) UPON COMPLETION OF THE NEED TO RETAIN THE DRAWING, OR UPON DEMAND, RETURN THE DRAWING, ALL COPIES THEREOF, AND ALL MATERIAL COPIED THEREFROM.</small>		<small>TITLE</small> <b>GENERAL ARRANGEMENT</b>	
<small>SIZE</small> <b>A1</b>	<small>DWG NO.</small> <b>46576439</b>	<small>REV</small> <b>A</b>	
<small>SCALE</small> 0.08	<small>SHEET 6 OF 6</small>		