

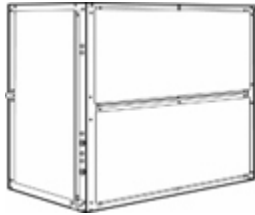
**CAR 10T cv**

**Submittal Cover Sheet  
Unit Report  
Performance Summary Report  
Certified Drawings**

## Unit Report For CAR 10T cv

Project: ~Untitled1  
 Prepared By: Territory Manager

04/18/2018  
 05:51PM



**Indoor Unit Parameters**

Unit Model:.....**40RUS**  
 Unit Size:.....**10 Tons**  
 No. of Splits:.....**1**  
 Voltage:.....**460-3-60** V-Ph-Hz

**System Parameter**

System Quantity:.....**2**  
 Compressor Type:.....**N/A**

**Indoor Unit Dimensions and Weight**

Unit Length:.....**4' 1.0"**  
 Unit Width:.....**2' 4.2"**  
 Unit Height:.....**4' 8.1"**  
 Unit Shipping Weight:.....**384** lb  
 Unit Operating Weight:.....**391** lb

**Warranty Information (Note: for US & Canada only)**

**NOTE: Please see Warranty Catalog 808-218 for explanation of policies and ordering methods.**

**Ordering Information**

Part Number	Description	Quantity
<b>Base Unit - Indoor</b>		
40RUSA12A2A6-0A0A0		2
	Base Unit	
	Std Static, Std Effy Motor/ Medium Drive	2
	Cabinet Paint - None	2
	None- No Controller	2

## Performance Summary For CAR 10T cv

Project: ~Untitled1  
 Prepared By: Territory Manager

04/18/2018  
 05:51PM

**System:** ..... **40RUS012**  
**System Quantity:** ..... **2**  
**Altitude:** ..... **0.0** ft

### Indoor Unit Parameters

PartNumber: ..... **40RUSA12A2A6-0A0A0**  
 Unit Model: ..... **40RUS**  
 Unit Size: ..... **10 Tons**  
 No. of Splits: ..... **1**  
 Voltage: ..... **460-3-60** V-Ph-Hz  
 Actual Airflow: ..... **4000.0** CFM  
 Total Clg Cap.(Gross): ..... **129.3** MBH  
 Sensible Clg Cap.(Gross): ..... **96.3** MBH  
 Ent Air DB: ..... **80.0** °F  
 Ent Air WB: ..... **67.0** °F  
 Ent Enthalpy: ..... **31.44** BTU/lb  
 Lvg Air DB: ..... **58.0** °F  
 Lvg Air WB: ..... **56.8** °F  
 Lvg Enthalpy: ..... **24.26** BTU/lb  
 Coil Bypass Factor: ..... **0.108**  
 Fluid Flow Rate: ..... **25.8** gpm  
 Ent Fluid Temp: ..... **45.0** °F  
 Lvg Fluid Temp: ..... **55.0** °F  
 Fluid Rise: ..... **10.0** °F  
 Fluid PD: ..... **4.7** ft wg  
 Fluid Type: ..... **Fresh Water**  
 Fluid Conc: ..... **0** %

### Indoor Supply Fan

Indoor Unit External Static: ..... **0.75** in wg  
 Economizer Loss: ..... **0.00** in wg  
 Grille Loss: ..... **0.00** in wg  
 Plenum Loss: ..... **0.00** in wg  
 Acc. Heating Loss: ..... **0.00** in wg  
 Total Ext Static: ..... **0.75** in wg  
 Fan Speed: ..... **882** RPM  
 Fan Power: ..... **2.08** BHP  
 Fan Motor Max: ..... **2.40** BHP  
 Fan Motor FLA: ..... **2.6** Amps

Motor and Medium Static Drive Required.

### Indoor Electrical Data

Unit Voltage: ..... **460-3-60** V-Ph-Hz  
 Unit MCA: ..... **4.0** Amps  
 Unit MOCP: ..... **15.0** Amps

Notice: Indoor unit elect. data is based on 460-3-60  
 Motor is rated for tri voltage 208/230/460-3-60V. Factory wired for 460-3-60 application.

### Acoustics

Sound Power Levels, db re 10E-12 Watts

A-Weighted	Outdoor Unit (dB)	Indoor Unit (dB,Ducted)
Total Level	NA	91.7
63Hz	NA	72.4
125Hz	NA	78.5
250Hz	NA	82.0
500Hz	NA	86.4

# Performance Summary For CAR 10T cv

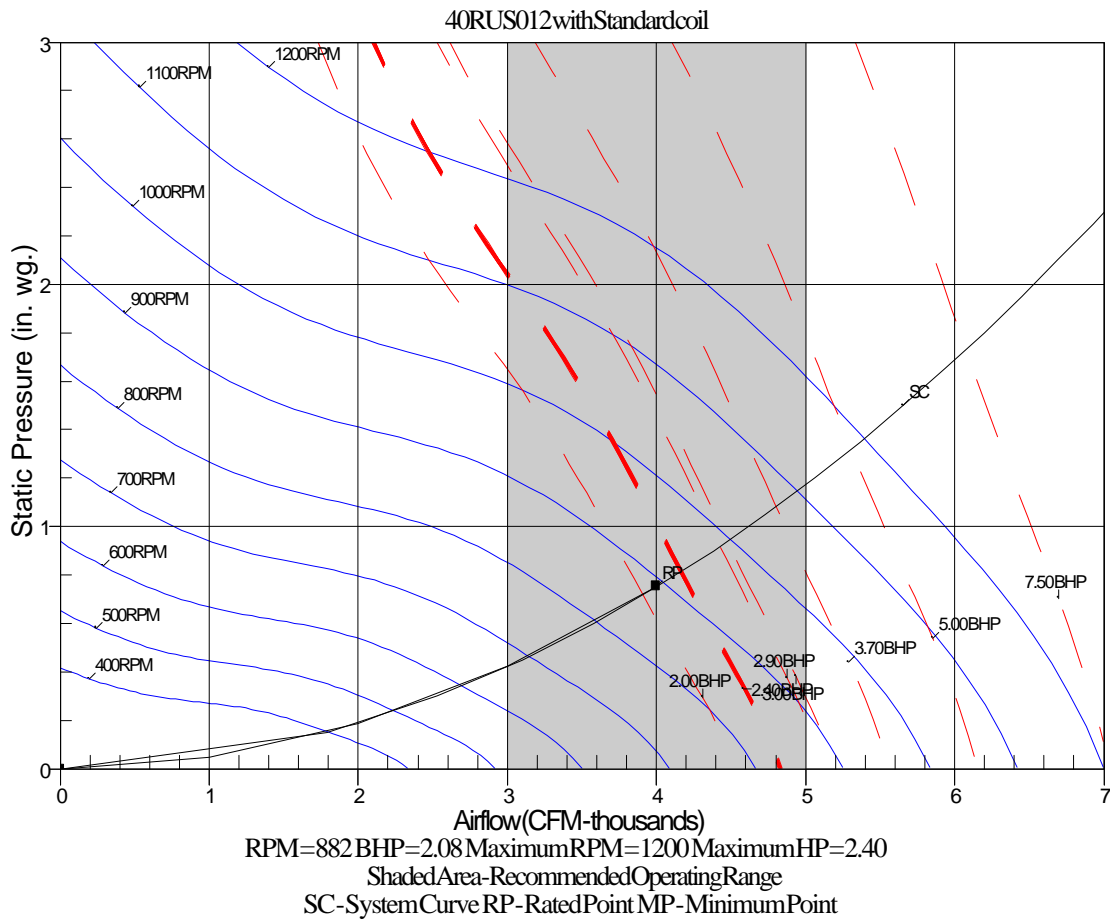
Project: ~Untitled1  
 Prepared By: Territory Manager

04/18/2018  
 05:51PM

1000Hz	NA	85.6
2000Hz	NA	84.8
4000Hz	NA	80.6
8000Hz	NA	NA
Sound Message	Sound for rus012	

**Acoustic Note:**

1. 40RU units sound ratings are in accordance with AHSRAE 1987 HVAC Systems and Applications handbook.
2. The acoustic center of the unit is located at the geometric center of the unit.



# Certified Drawing for CAR 10T cv

Project: ~Untitled1  
Prepared By: Territory Manager

04/18/2018  
05:51PM

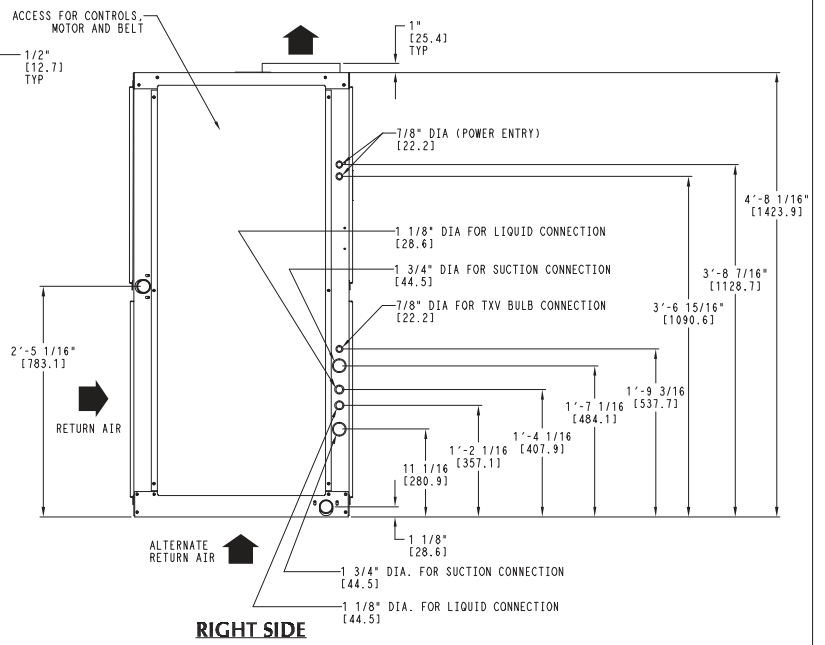
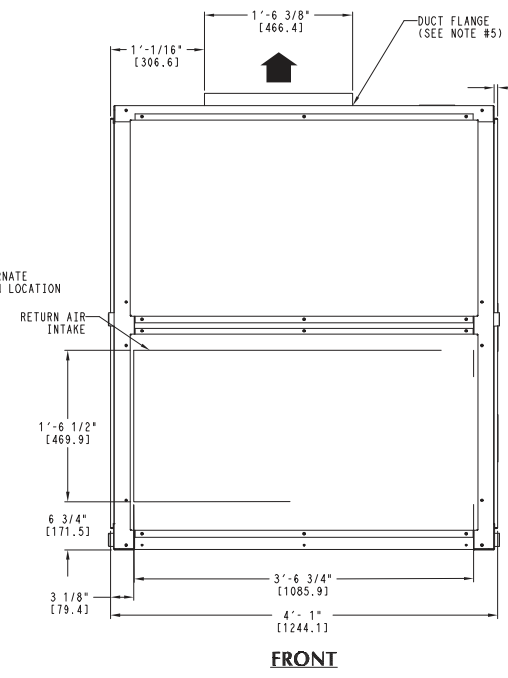
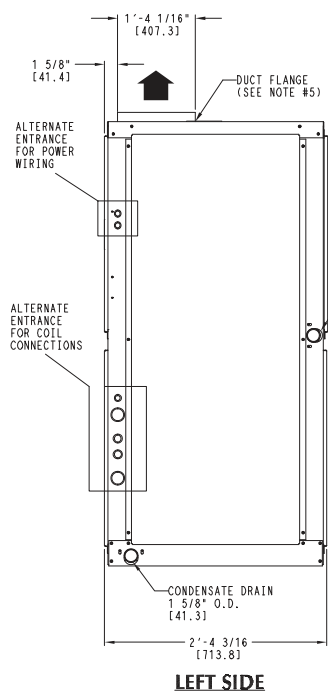
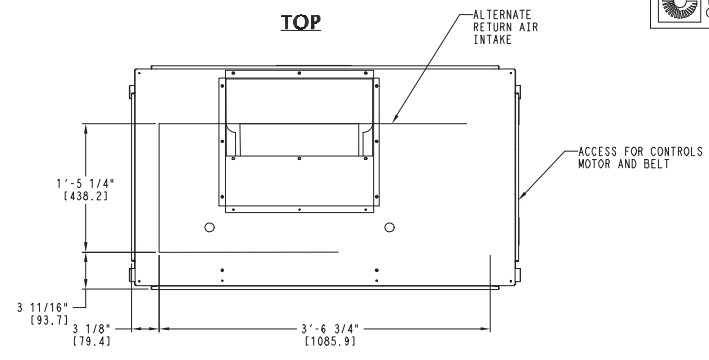
UNIT	UNIT WEIGHT (W/TXV)
40RUA-07	399 lbs [181 kg]
40RUA-08	404 lbs [183 kg]
40RUA-12	425 lbs [193 kg]
40RUO-07	381 lbs [173 kg]
40RUO-08	385 lbs [175 kg]
40RUO-12	427 lbs [194 kg]
40RUS-08	390 lbs [177 kg]
40RUS-10	391 lbs [177 kg]
40RUS-12	391 lbs [177 kg]

UNITED TECHNOLOGIES CARRIER  
 P. O. BOX 4808 SYRACUSE, NY 13221  
 THIS DOCUMENT IS THE PROPERTY OF CARRIER CORPORATION AND IS DELIVERED UPON THE EXPRESS CONDITION THAT THE CONTENTS WILL NOT BE DISCLOSED OR USED WITHOUT CARRIER CORPORATION'S WRITTEN CONSENT.  
 SUBMISSION OF THESE DRAWINGS OR DOCUMENTS DOES NOT CONSTITUTE PART PERFORMANCE OR ACCEPTANCE OF CONTRACT.

- NOTES:
- DIMENSIONS IN [ ] ARE IN MILLIMETERS.
  - DIRECTIONS OF AIRFLOW.
  - RECOMMENDED CLEARANCE:  
 REAR: 3 IN. [76 mm]  
 FRONT: 2 ft 6 in. [762 mm]  
 RIGHT SIDE: 2 ft 6 in. [762 mm]  
 LEFT SIDE: 2 ft 6 in. [762 mm]  
 LOCAL CODES OR JURISDICTION MAY PREVAIL.
  - LIQUID PIPING NOT SUPPLIED BY CARRIER.
  - DUCT FLANGE IS FACTORY SUPPLIED AND FIELD INSTALLED.

ACCESSORY	SEE DRAWING
DISCHARGE PLENUM	40RMS00996
ECONOMIZER	40RMS00999
STEAM COIL	40RMS00999
HOT WATER COIL	40RMS00999
RETURN AIR GRILLE	40RMS00996
OVERHEAD SUSPENSION	40RMS00996
SUBBASE	40RMS00996
ELECTRIC HEAT <input checked="" type="checkbox"/>	40RMS01002

UNRELEASED DATA



DATE	SUPERCEDES	FAN COIL UNITS	REV
01/27/10	04/15/09	40RU A / Q / S - 07 / 08 / 10 / 12	E
		40RU500024	