



# 10,000 cfm Air Handling Unit

## General – RSAU0025F0 \_ \_

Model Number	.....TCCA
Nominal Tonnage	.....25 tons
Water Connection Size	.....2.5 in. Victaulic
Ambient Operating Conditions <sup>1</sup>	.....25–115°F
Supply Motor	.....20 Hp
Fused Disconnect	.....Yes
Number of Electrical Circuits	.....1
Discharge Configuration	.....Horizontal
Flex Duct Connection Size	.....19 in round
Number of Discharge Air Connections	.....2
Max Discharge Static Pressure	.....5.82 in. ESP
Filter Rack (Quantity and size) <sup>2</sup>	.....(4) 24" x 24", (2) 24" x 12"
Nominal Air Flow (cfm)	.....10,000
Min/Max Air Flow (cfm)	.....8,000/15,000
Insurance Value	.....\$35,000

*Selection is required for actual AHU performance.*

<sup>1</sup>*For ambient conditions below 40°F, glycol is recommended.*

<sup>2</sup>*Unit provided with standard 2" filters. Filter rack will accept up to 95% efficient MERV 14 filters.*

## Electrical Data

Voltage	.....460V 3-phase
Frequency	.....60 Hz
Lug(s) can accept wire up to <sup>3</sup>	.....#3 AWG wire
Minimum Circuit Ampacity (MCA)	.....42.5 amps
Maximum Overcurrent Protection (MOP)	.....60 amps

<sup>3</sup>*Depending on unit MCA and wire used, multiple wires per phase may be required.*

*For additional electrical information contact Trane Rental Services.*

## Total Cooling Capacity

Entering Chilled Water Temperature (F)	Outdoor Ambient Temperature (F)
	84 db / 77 wb
44	909.85 MBh

*Contact Trane Rental Services for specific selection information.*

## Water Flow Rates

	Minimum	Standard	Maximum
Coil Flow	70 gpm	151 gpm	400 gpm
Pressure Drop	—	4.61 ft H <sub>2</sub> O	—

*Maximum water side pressure is 150psi (2.31' H<sub>2</sub>O = 1 psi)*

## Dimensions and Weights

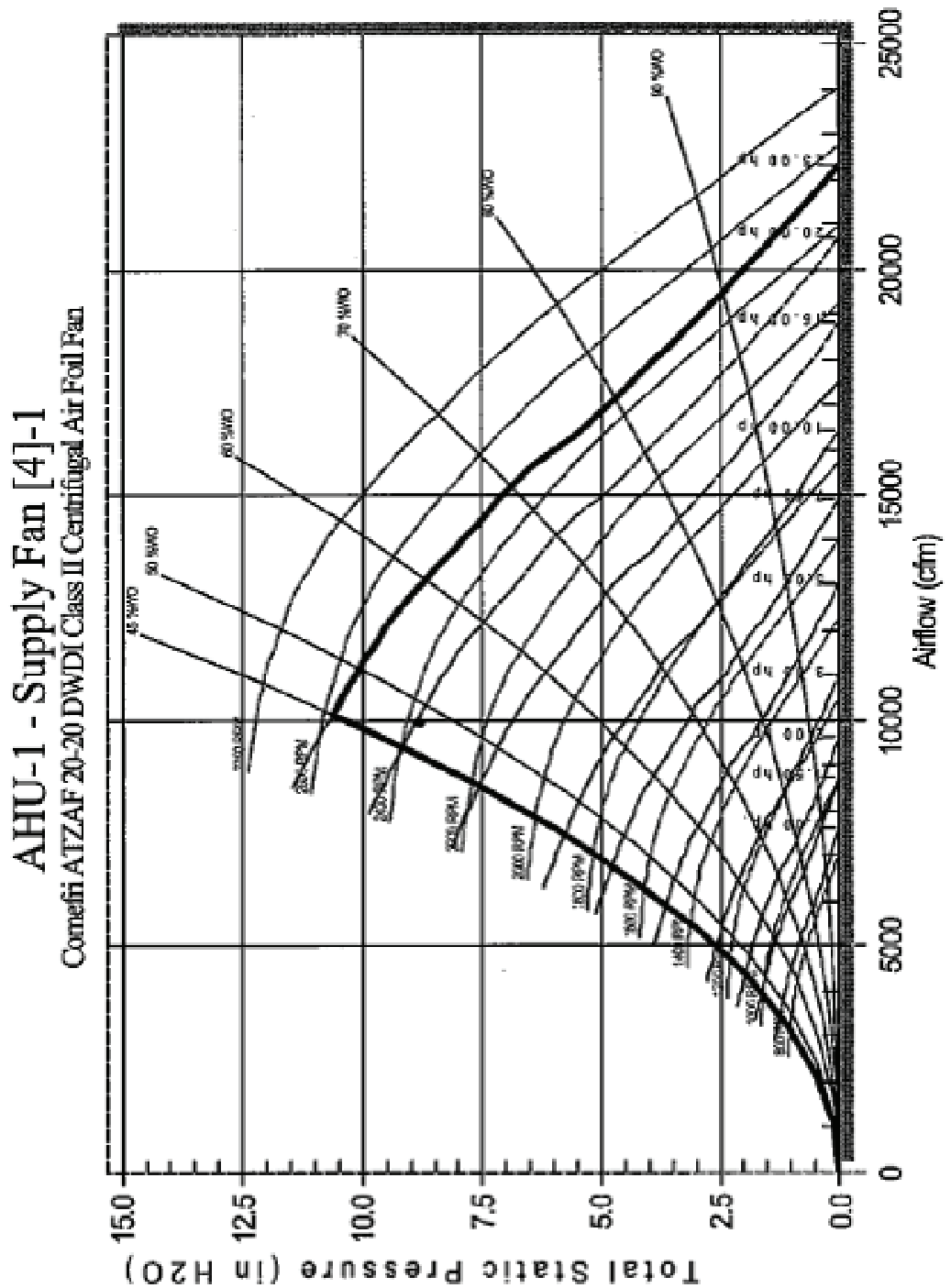
Length	16 ft 0 in
Width <sup>4</sup>	7 ft 4 in
Height	7 ft 6 in
Weight	6,000 lbs

<sup>4</sup>*Width includes permanently mounted piping manifold.*

## Lifting Device: Fork Lift or Crane

# 10,000 cfm Air Handling Unit (nom. 25-tons)

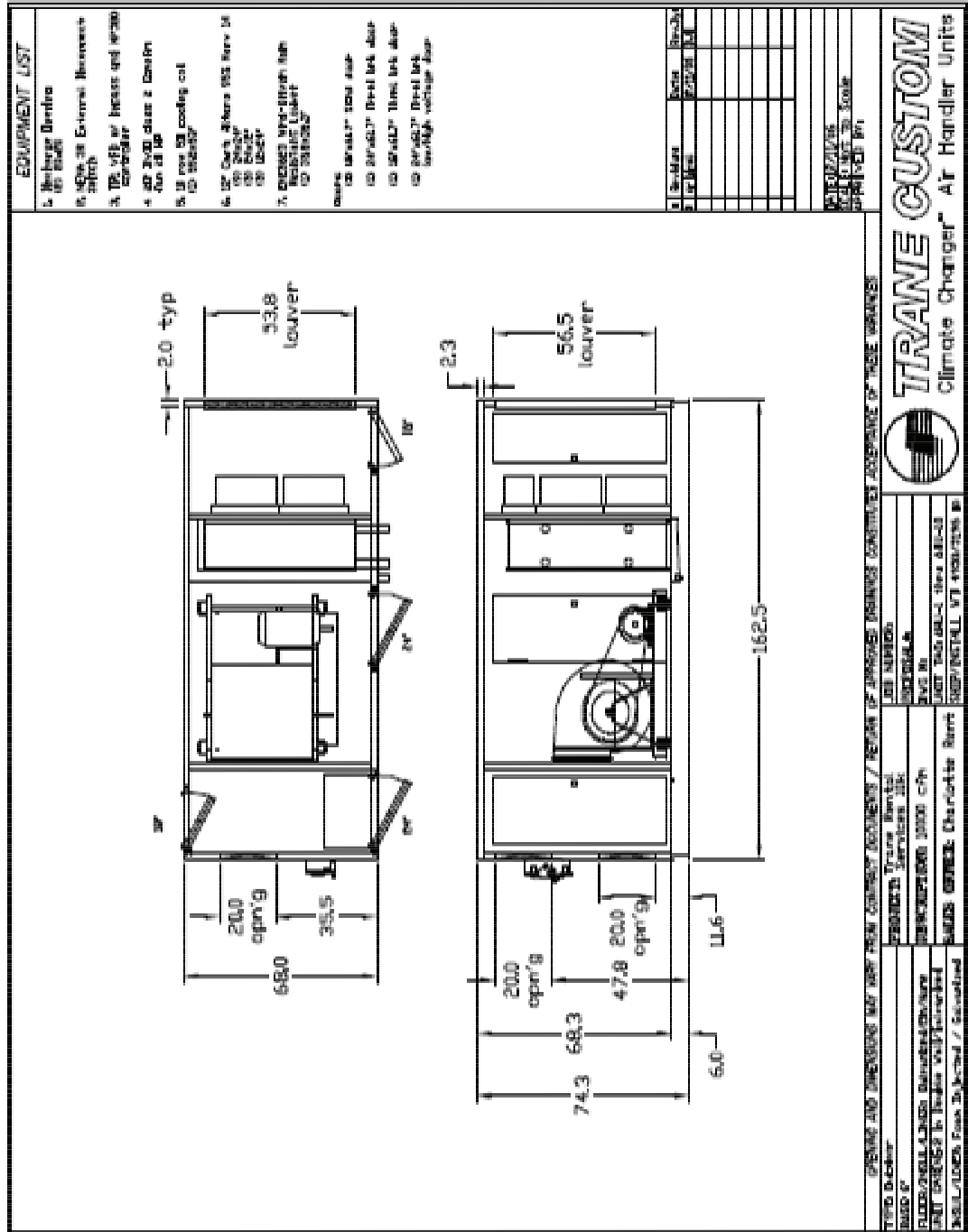
## 10,000 cfm Air Handling Unit Fan Curve





# 10,000 CFM Air Handling Units

## 10,000 cfm Air Handling Unit Drawing



Note: Drawing should be used for information only as drawing depicts factory unit without rental modifications.